

PSiO TRANS

Installation Guide

VIBRO-ACOUSTIC SYSTEM PSiO TRANS

Vibro-acoustic science allows to produce sounds & vibrations from a specially calibrated recording by sound engineering. Vibratory sound waves are produced in the surface plane on which the transducers are attached. They propagate throughout the body and provide a form of deep massage of the soft tissues and skeleton when the person is lying on the treatment table or in a recliner.

This generates a feeling of intense pleasure on the one hand and a rebalancing of the tensions of the motor and smooth muscles (of the viscera) on the other hand. Some functions are harmonized by this process and further harmonize themselves naturally. There are currently no known contraindications. Each experience is unique. Given the fact that each person is different, experiments can be made using the recordings that have the most effect.

In all cases, the experience is fantastic and the sensation is rich and deep.

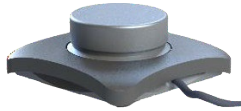
MICROCIRCULATION IMPROVES WITH VITRO-ACOUSTIC STIMULATION

Users notice a sensation of warmth from the first session on. The micro-circulation is stimulated, a rapid vasodilation takes place and this improvement of the micro-circulation produces a sensation of heat in the deep stimulated zones where the resonance of the sound frequencies of 50 to 60 hertz is transmitted. The deep muscles, ligaments and tendons are subtly stimulated and the bone structure resonates gently.

Details of the offer

- 2 transducers
- 1 smartphone including 51 vibro-acoustic tracks
- 1 amplifier and power supply
- 1 audio cable

TRANSDUCER INSTALLATION



On the back of your table, draw a horizontal line down to the center of the table so that you can position the transducers correctly: one at heart level and the other at lower thigh level.

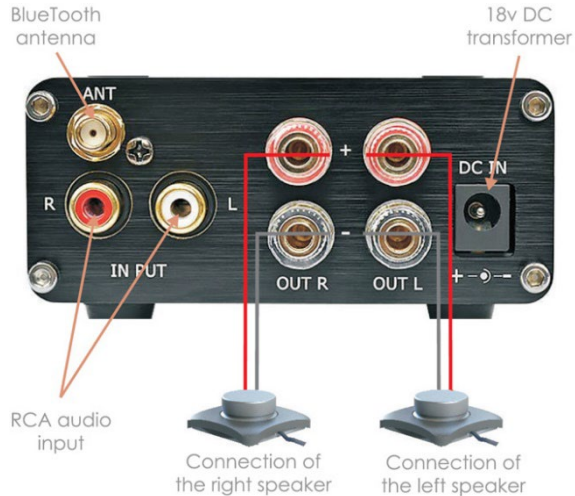


Once you have marked the location of the transducers, place them so that the wires run in the same direction for easy connection to the power supply. Check that the table can fold back properly before gluing the transducers in place.

Using the supplied wipe, clean the area before gluing the transducers. Once the area is dry, install the transducers by pushing on the black part of the transducer for 20 seconds.

CONNECTIONS

BACK APRON OF AMPLIFIER



CONNECTING THE TRANSDUCERS

The transducers are connected to the "OUT R" and "OUT L" connectors. To connect the transducers to the amplifier, unscrew the clear plastic nut until the through-hole is visible. Insert the red wire from the transducer into the holes in the red (+) connector and insert the black wire from the transducer into the holes in the black (-) connector, then screw the clear plastic nut back on to secure the transducer wire in place.

CONNECTING THE POWER SUPPLY

Make sure that the power switch on the amplifier (front panel) is set to OFF. Then plug the power supply into the "DC IN" socket. Then plug the power supply into the 110v (Canada) / 220v (Europe) power outlet.

BLUETOOTH ANTENNA

Connect the antenna supplied with the amplifier to the "ANT" socket (rear panel).

ANALOG INPUT RCA

Allows the connection of an audio device (smartphone, iPod...) using the male RCA cable to be connected to the "INPUT" sockets (rear apron of the amplifier).

OPERATION

FRONT PANEL OF AMPLIFIER



VOLUME MANAGEMENT

The volume can be adjusted both by using the volume control on the amplifier front panel and through the volume control of the smartphone (iPod ...).

MANAGEMENT OF THE EQUALIZER

You can fine-tune the sound with the "TREBLE" and "BASS" knobs depending on the style of music or the type of media the transducers are connected to.

TWO SOUND SOURCES INPUTS

The amplifier can be used either via Bluetooth or via the RCA cable.

INSTRUCTIONS FOR USE

CONNECTIONS

Always use the power supply provided by Psychomed.

Always connect the amplifier to the power supply first before plugging the unit in the power outlet 110v (Canada) / 220v (Europe).

It is important that the red (+) and black (-) wires ends do not touch each other when connected at the back apron of the amplifier ("OUT R" and "OUT L")

BLUETOOTH

Activate Bluetooth on your phone or tablet, then connect to the amplifier by using the network name: atman-bt6oz

If another person wants to connect to the amplifier's Bluetooth, the Bluetooth of the previously connected person should be disconnected first if she/he is still within range of the amplifier.

OPERATION

Avoid turning the TREBLE / BASS / VOLUME knobs to maximum to preserve both the integrity of the transducers and the sound quality.

The sound quality of the amplifier reaches its optimum level after the first 10 hours of playback.

PSiO TRANS INSTALLATION TUTORIAL

A detailed installation tutorial is provided together with a visual support.

<https://www.youtube.com/watch?v=QvgeZT6Z3n4>



**FOR ANY QUESTIONS ON THE INSTALLATION OF THE PSiO TRANS,
PLEASE CONTACT PSYCHOMED AFTER-SALES SERVICE AT THE
FOLLOWING ADDRESS:
INFO@PSIO.COM**



PSYCHOMED.COM

Vieux Chemin de Wavre 117a - 1380 Ohain | Belgium

+32 2 653 32 48

info@psio.com - www.psio.com - www.audiocament.com

Follow us on:



Copyright © 2023 PSYCHOMED.com® S.A. All rights reserved.